

Impact of MGNREGA in rural employment a special reference in District Jalaun (U.P.)

Priyanka Sengar

Research Scholar, Commerce, MGCGV, Chitrakoot, Madhya Pradesh, India

Abstract

The Constitution of India refers to the right of works under the directive principals of State Policy. In this regard, The Mahatma Gandhi National Rural Employment Guarantee Act draws on the experience of earlier employment program in terms of poverty reduction and employment in rural India. Therefore, MGNREGA, 2005 has been formulated to provide guarantee of livelihood security in rural areas of the Country. This Act has emerged and important legislative measure to address poverty and Unemployment. Further, this Act ensure the livelihood security for people in rural areas by guaranteeing of 100 days of employment in a financial year to a rural households who willing to do unskilled manual work.

Keywords: Constitution, Employment, Formulated, Livelihood, Legislative, Unemployment

1. Introduction

The Mahatma Gandhi National Rural Employment Guarantee Act has initially implemented in 200 districts with effect from 2006. Thereafter, this Employment Program has extended throughout the Country in 2007. Finding of this Employment Program between Central and State in the ratio of 75:25. This Employment Program has been implemented our excited at the Central State, District, Block and Panchayat Level in the Country.

Jalaun District is a District of Uttar Pradesh State of India. Jalaun District is a named after town of Jalaun, which was the former headquarters of Maratha Governor, but the Administrative headquarter of the district is at orai. Other large town of the district is Jalaun, Konch, Madhogarh and Kalpi. This district is a part of Jhansi Division. The district has an area of 4565km, and a population of 1689774 (2011 Census) with a population density of 370 persons per km. The population growth rate over the decade (2001-2012) was 16.19.

1.2 Objective of the MGNREGA Act

The basic objective of the Act is to enhance livelihood security in rural areas by providing at least 100 days of guaranteed wage employment in a financial year to every household whose adult members volunteer to do unskilled manual work. The Act initially came in to force in 200

districts with effect from 2nd February 2006. The Act has also intent to server other objectives such as generating productive assets protecting the environment empowering rural women, reducing rural-urban migration and fostering social equity.

1.3 Implementation Mechanism of MGNREGA

This Chart displays mechanism of implementation and key bodies and functionaries that are responsible for the effective implementation of the Act. According to the MGNREGA Operational Guidelines, the Ministry of Rural Development, Government of India is the Nodal Ministry for the Implementation of MGNREGA. It is required to set up the Central Council which will be responsible for ensuring timely and adequate support to the States.

It will undertake regular review, monitoring and evaluation of processes and outcomes. It will establish a Management Information System (MIS) to capture and track data on every critical aspect of implementation, and assess the utilization of resources through a set of performance indicators. It will support the use of the Information Technology (IT) to increase the efficiency and transparency of the processes as well as improve interface with the public. It will also ensure that the implementation of MGNREGA at all levels is sought to be made transparent and accountable to the public. An implementation mechanism of MGNREGA is shown this chart given below.

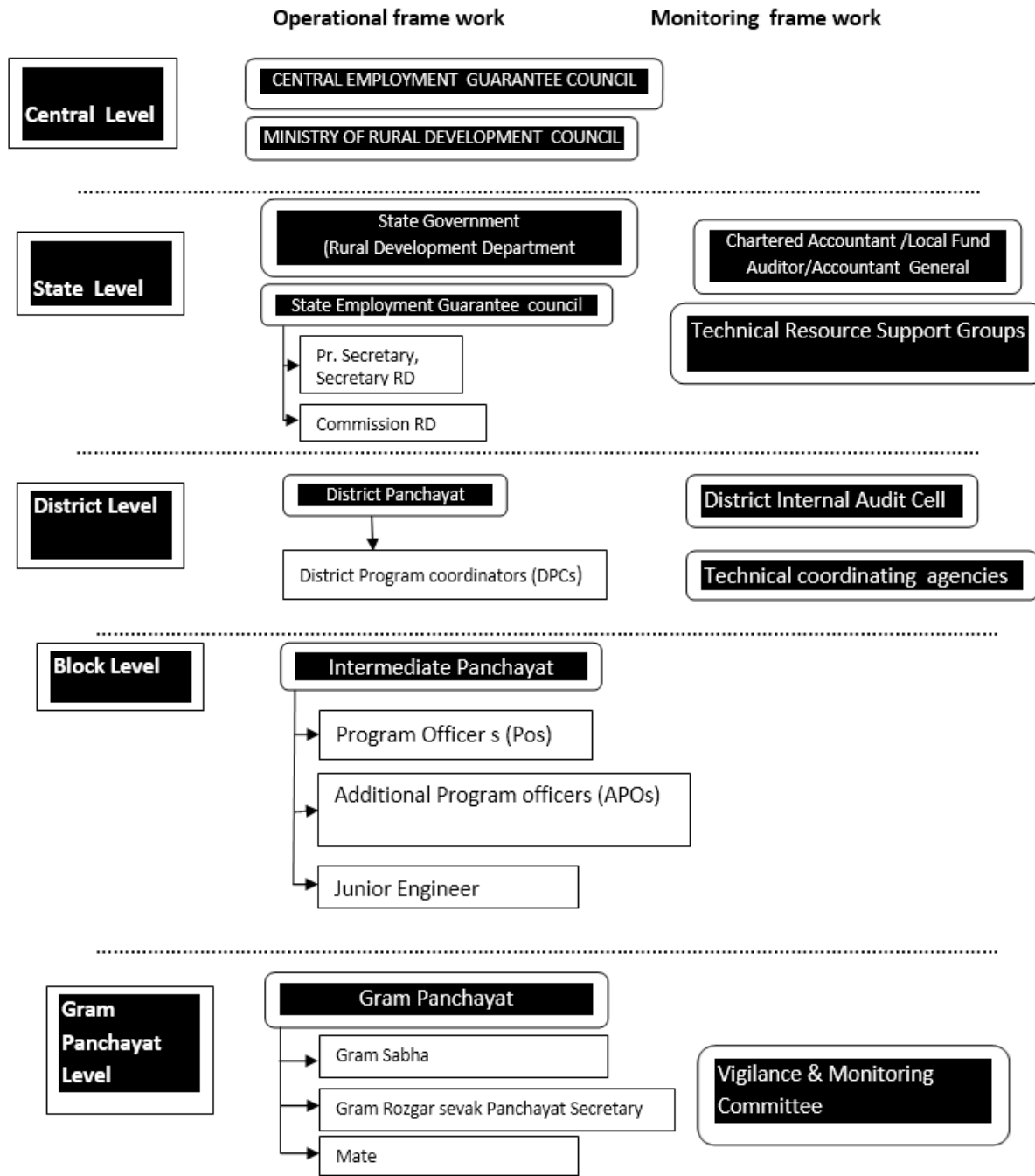


Fig 1: Implementation Mechanism of MGNREGA

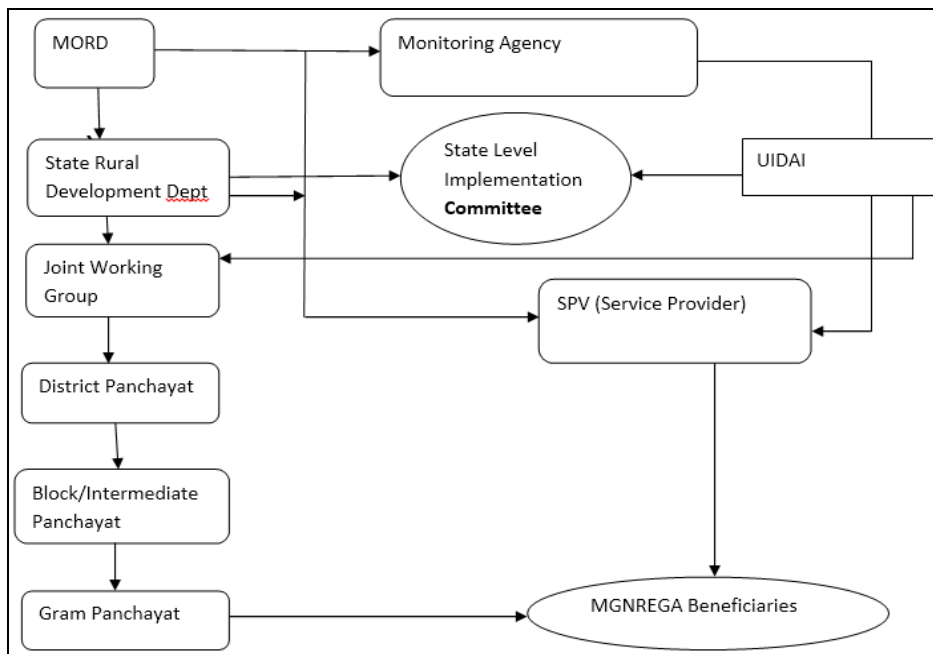


Fig 2: Monitoring System of India

Table 1: Statement of Total of Panchayats, Villages and MGNREGA Beneficiaries in Jalaun District

S. No.	Division	Block	No. of Panchayats	No. of Villages	No. of MGNREGA Beneficiaries
1	Jalaun	Jalaun	61	116	16121
		Kuthond	66	143	22889
2	Madhogarh	Madhogarh	57	98	16416
		Rampura	43	86	15396
3	Orai	Dakore	76	155	24368
4	Kalpi	Kadaura	58	129	19138
		Maheva	68	109	24160
5	Konch	Konch	62	121	20625
		Nadigaon	73	194	25855
Total			564	1151	

Source: MGNREGA Annual Report Jalaun 2015-16.

Table 2: Basic statistics about MGNREGA in District Jalaun (2015-16)

Employment Provided to Households (Person Days in Lacks)	0.81534
Total	28.04
Schedule Caste (SC)	8.19 (27.22%)
Scheduled Tribe (ST)	0.14 (0.51%)
Women	7.68 (27.44%)
Others	19.7 (70.22%)
Total Fund (Rs. In Crores)	491.14
Expenditures (Rs. In Crores)	304.47(16.99%)
Total Works	8449
Works Completed	949 (11.23%)
Works in Progress	7500 (88.77%)

Source: www.mgnrega.nic.in

Table 3: Registration and Employment Under MGNREGA in Jalaun District

Year	Cumulative No. of Household Registered	Cumulative No. of Household Issued Job Card	Percentage of Registered to issued Job Cards
2007-08	1,28,418	1,28,418	100.00
2008-09	1,28,418	1,28,418	100.00
2009-10	1,48,641	1,48,641	100.00
2010-11	1,64,468	1,64,468	100.00
2011-12	1,79,537	1,79,537	100.00
2012-13	1,84,418	1,75,707	95.28
2013-14	1,84,802	1,75,941	95.21

Source: www.nic.in

Table 4: Growth in Total Population of Jalaun District (1981-2011)

S. No.	Year	Male	Female	Total	Percentage Change
1	1991	430297	359439	789736	12.56%
2	1991	521282	428898	950180	20.31%
3	2001	786641	667811	1454452	18.28%
4	2011	906092	783882	1689974	16.19%

2. Conclusion

The Mahatma Gandhi National Rural Employment Guarantee Act is possibly the biggest and largest employment program in the world. About 30 % Indians lived in absolute poverty, most of vulnerable are from the Schedule Caste around Schedule Tribes, the minorities and the other Backward Classes. The Rural people principally comprise of landless labor, who are not even assured of finding work on a daily basis. In this context, the MGNREGA assumes importance since it guarantees 100 days of work to anyone desirous of it at the minimum wage.

Independent Studies and research indicates that MGNREGA has aided in enhancement of agricultural productivity, stemming of distress migration, increased access to markets and services through rural connectivity works, supplementing household incomes, increase in women workforce participation ratios, and the regeneration of Natural Resources.

To conclude thought these are some short coming like misappropriation of funds at some places. However this Act, is really a boon for the rural people. If its implement transparently, corruption will be eradicated and certainly it enhances the standard of living of the rural people.

3. References

1. The Mahatma Gandhi National Rural Employment Guarantee Act, 2005, Govt. of India, Universal Law publishing, Company Pvt. Ltd. New Delhi. 2011.
2. Negi BS. Implementation of MGNREGA in the Tribal Area of Himachal Pradesh, LAP Lambert Academic publishing. 2012.
3. Singh SR. National Rural employment Guarantee Act (NREGA); Issue & Challenges, APH Publishing House, 2011.